

perhaps once part of a tumulus. If you turn R, 200m further along the ridge is a stone sarcophagus, probably of the mid-Roman Empire era, with fishes on either side of the central shield, grapes twining up each corner and on each end a laurel wreath and swags and garlands. The roof is carved with curved mock tiles, much like one at Olympos. Who did it commemorate? From the grave chamber, the path descends to farmland called Tarlalı, the home of Hüseyin, who lives most of the year in a cottage on the far side of the farmland. You will be welcomed by his two huge sheep dogs; be prepared to throw stones at them if necessary.

1hr 15mins

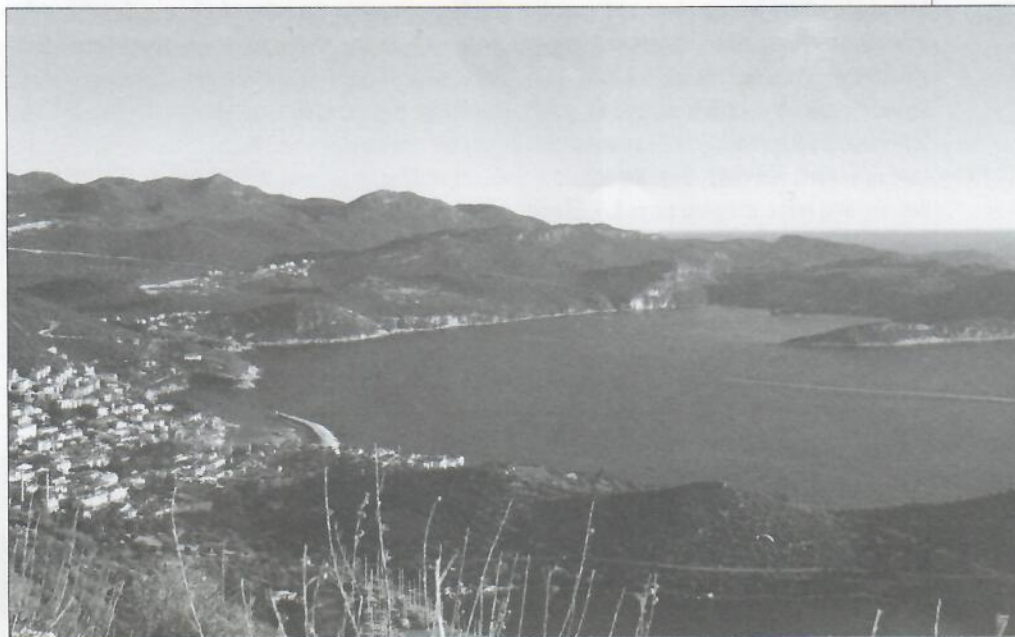
The G2 path to Gökçeören continues R/E along the N side of the fields then rises from the corner through maquis to cross a ridge behind. Fork R on the ridge and descend to a long series of fields dotted with trees where an old G4 walled path continues E across the fields towards a shepherds' cottage. Pass R of the cottage into ruins - old walls, doorways and graves emerge like ghosts from the undergrowth.

1hr

Leave the ruins by a G2 path running L/NE alongside a stone wall. Leaving the wall, it weaves about before running straight but indistinctly with a ridge on the L and farmland on the R. For a short distance, it follows a tractor track over a slight rise towards a huge oak tree. Continue past it straight through the fields to a pile of rocks with a grave chamber. A G2 path slips through a gap to the R/S of the rocks and descends to meet another G2 path. Turn L and continue level/NE through maquis with occasional small fields with the ova of Kuruovadüzü on the R. Cross a threshing-floor and bear R/down, onto a well-used G3 path. The path descends E round the head of the ova, passing two cisterns. At a junction, keep L/E, towards the ridge and, past the ridge-top, keep L/NE again. At the bottom of a diagonal descent, turn R/SE along a field edge then L/NE to reach the tarmac road at the graveyard. Turn R/SE to the mosque and village centre.

2hrs

Like Bezirgan, **Gökçeören** is a spread of red-roofed houses scattered on an ova between hills. It is at about 900m and has pine forest in and around the stream bed which bisects the plain and deepens to a steep valley at the southern edge, so giving a softer, friendlier aspect. Glowing fields of mustard climb the hills to old graves cut out of the rocks. The newish, whitewashed mosque is on the E side next to a spring near the road to Kaş; the İmam arranges accommodation.



Bezirgan to Gökçeören 55